

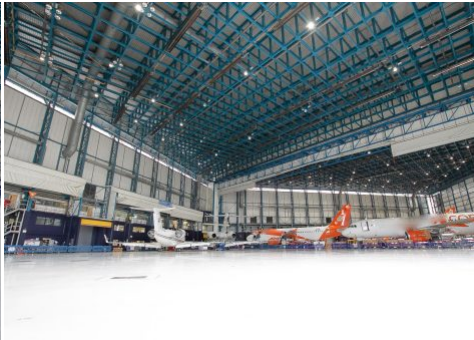


# LOCATION HQ

[More information available on the Location HQ website](#)

Tel: +44 (0) 203 302 0664 | E-mail: [info@locationhq.co.uk](mailto:info@locationhq.co.uk)

REF: 354899 REGION: London DISTANCE FROM LONDON: 16 Miles from the M25





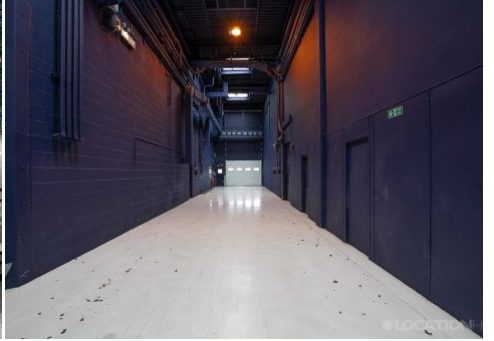
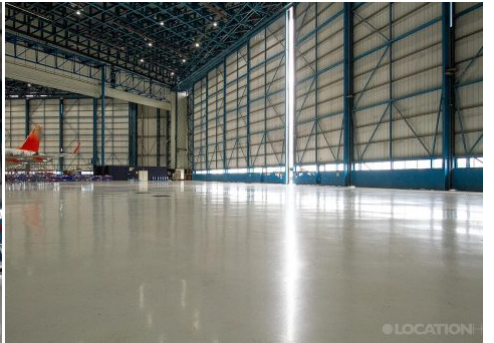
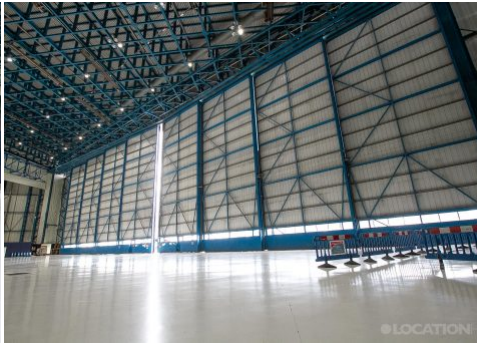


# LOCATION HQ

[More information available on the Location HQ website](#)

Tel: +44 (0) 203 302 0664 | E-mail: [info@locationhq.co.uk](mailto:info@locationhq.co.uk)

REF: 354899 REGION: London DISTANCE FROM LONDON: 16 Miles from the M25





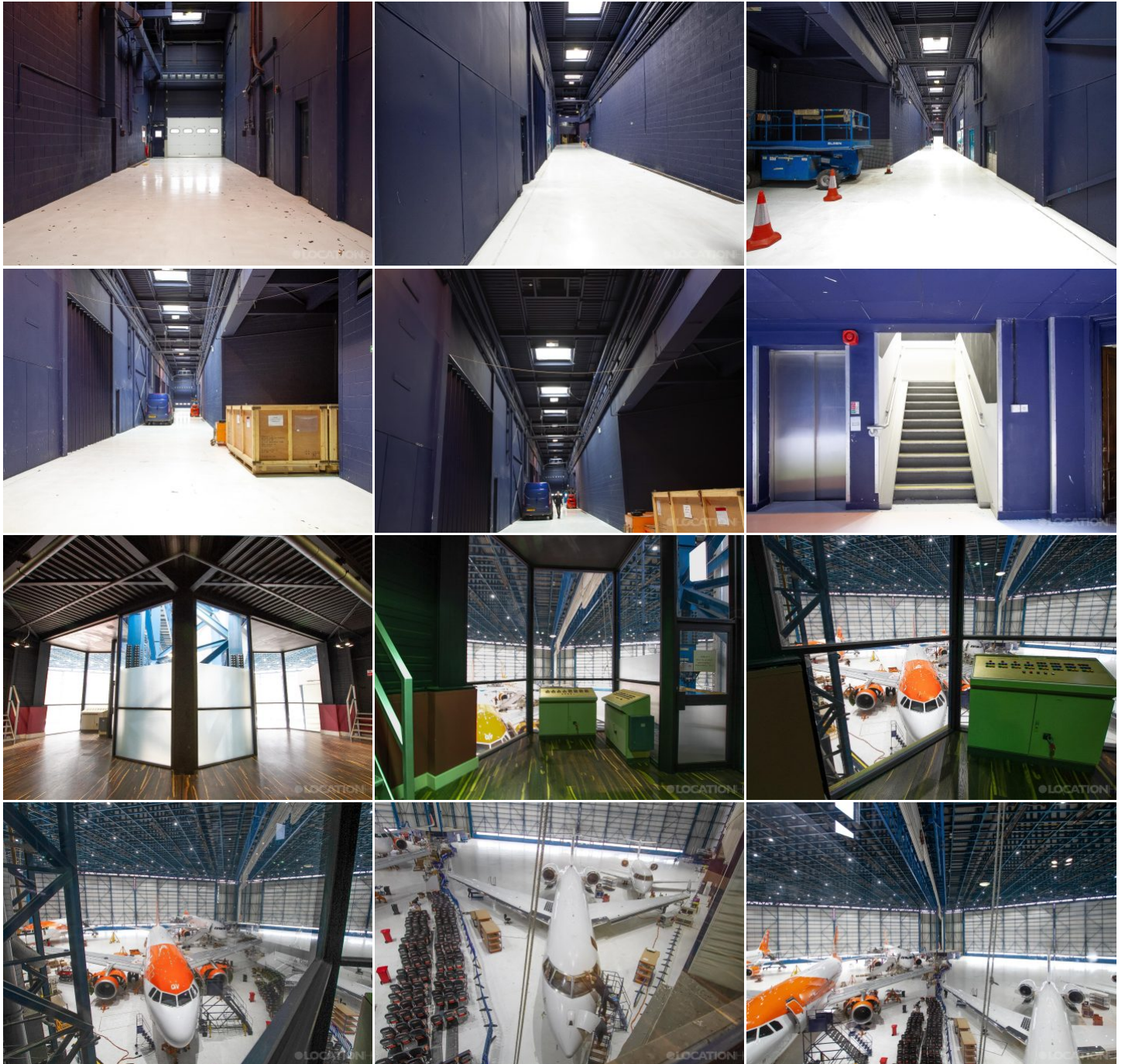


# LOCATION HQ

[More information available on the Location HQ website](#)

Tel: +44 (0) 203 302 0664 | E-mail: [info@locationhq.co.uk](mailto:info@locationhq.co.uk)

REF: 354899 REGION: London DISTANCE FROM LONDON: 16 Miles from the M25





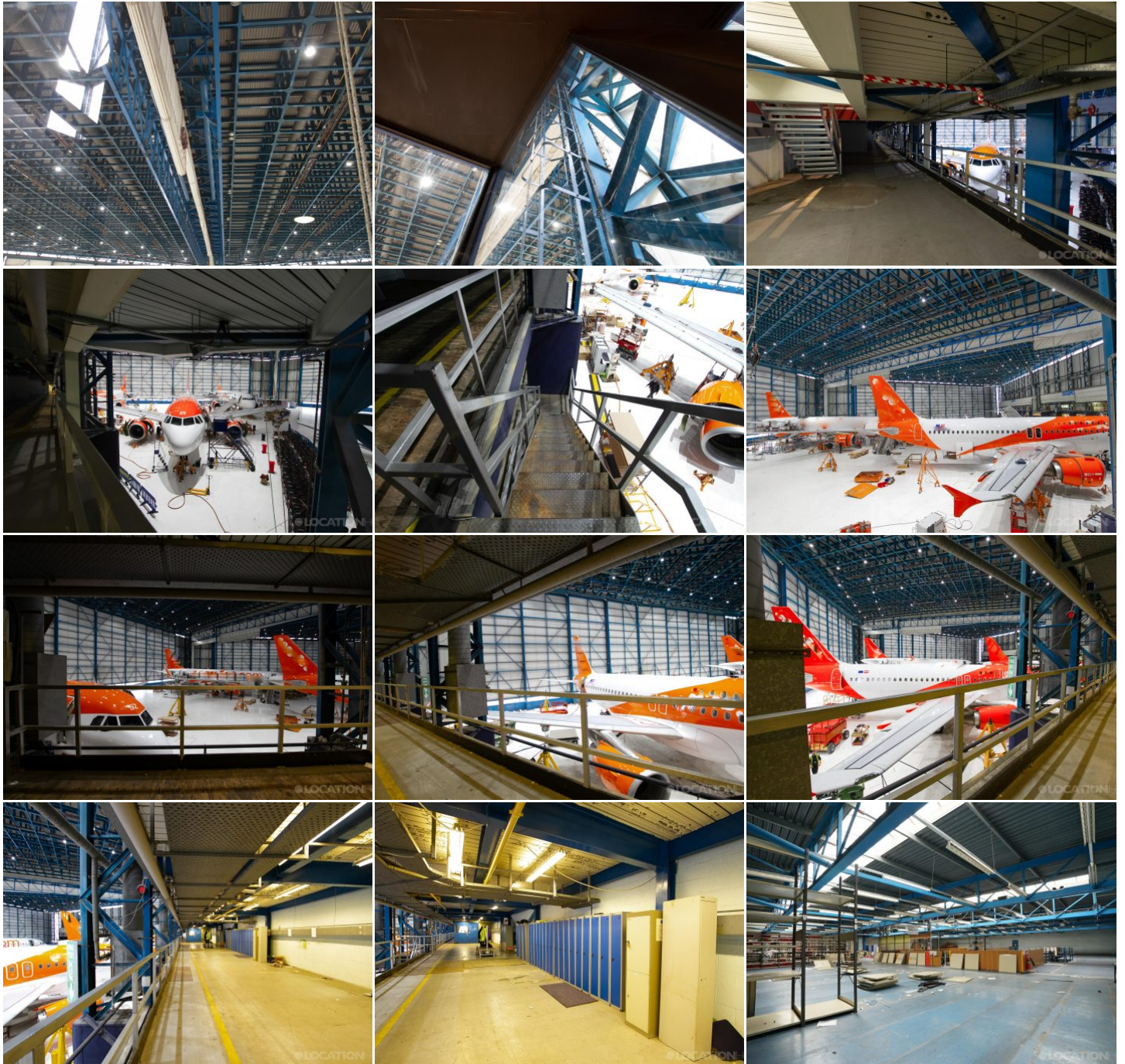


# LOCATION HQ

[More information available on the Location HQ website](#)

Tel: +44 (0) 203 302 0664 | E-mail: [info@locationhq.co.uk](mailto:info@locationhq.co.uk)

REF: 354899 REGION: London DISTANCE FROM LONDON: 16 Miles from the M25





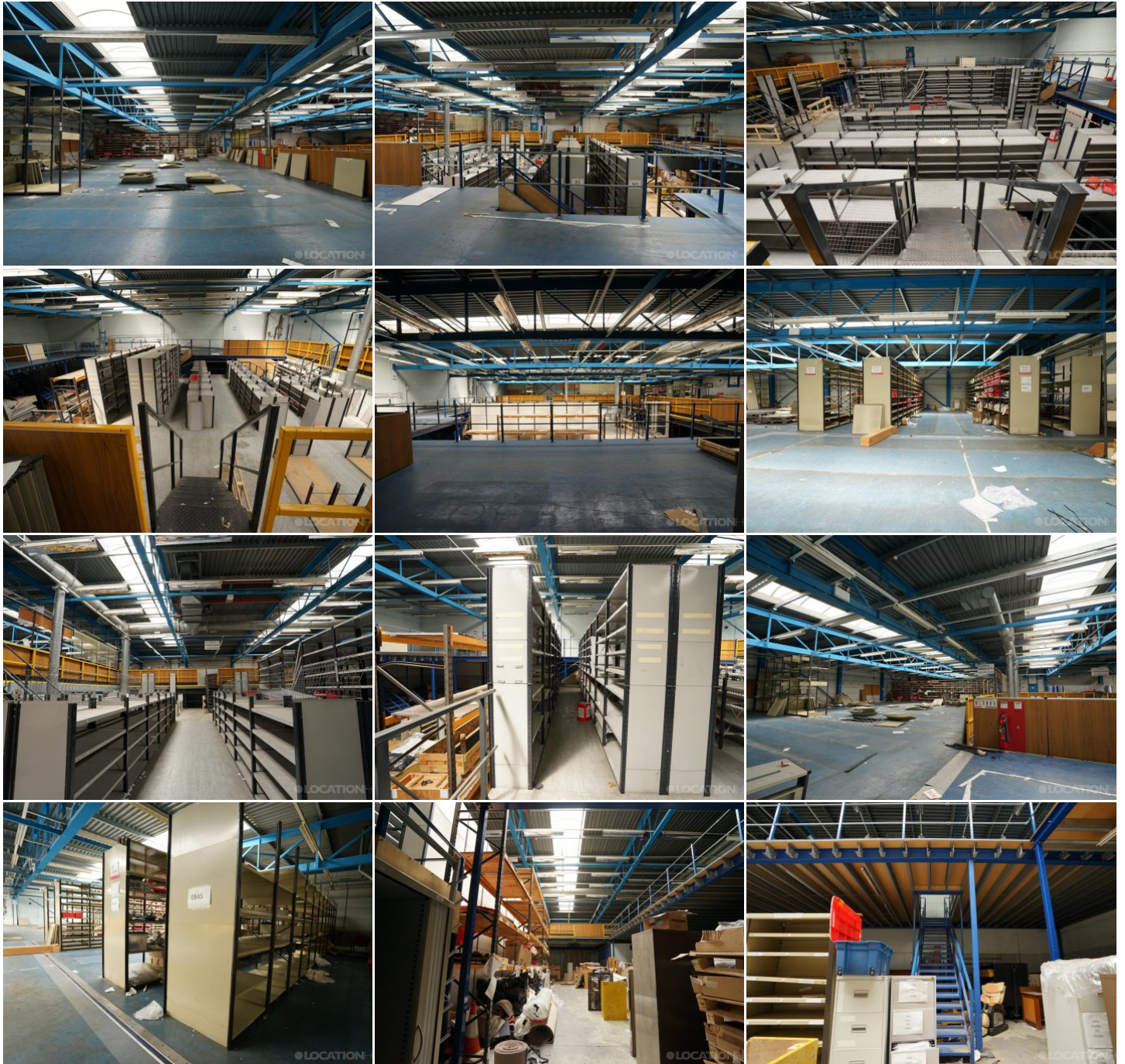


# LOCATION HQ

[More information available on the Location HQ website](#)

Tel: +44 (0) 203 302 0664 | E-mail: [info@locationhq.co.uk](mailto:info@locationhq.co.uk)

REF: 354899 REGION: London DISTANCE FROM LONDON: 16 Miles from the M25







# LOCATION HQ

[More information available on the Location HQ website](#)

Tel: +44 (0) 203 302 0664 | E-mail: [info@locationhq.co.uk](mailto:info@locationhq.co.uk)

REF: 354899 REGION: London DISTANCE FROM LONDON: 16 Miles from the M25





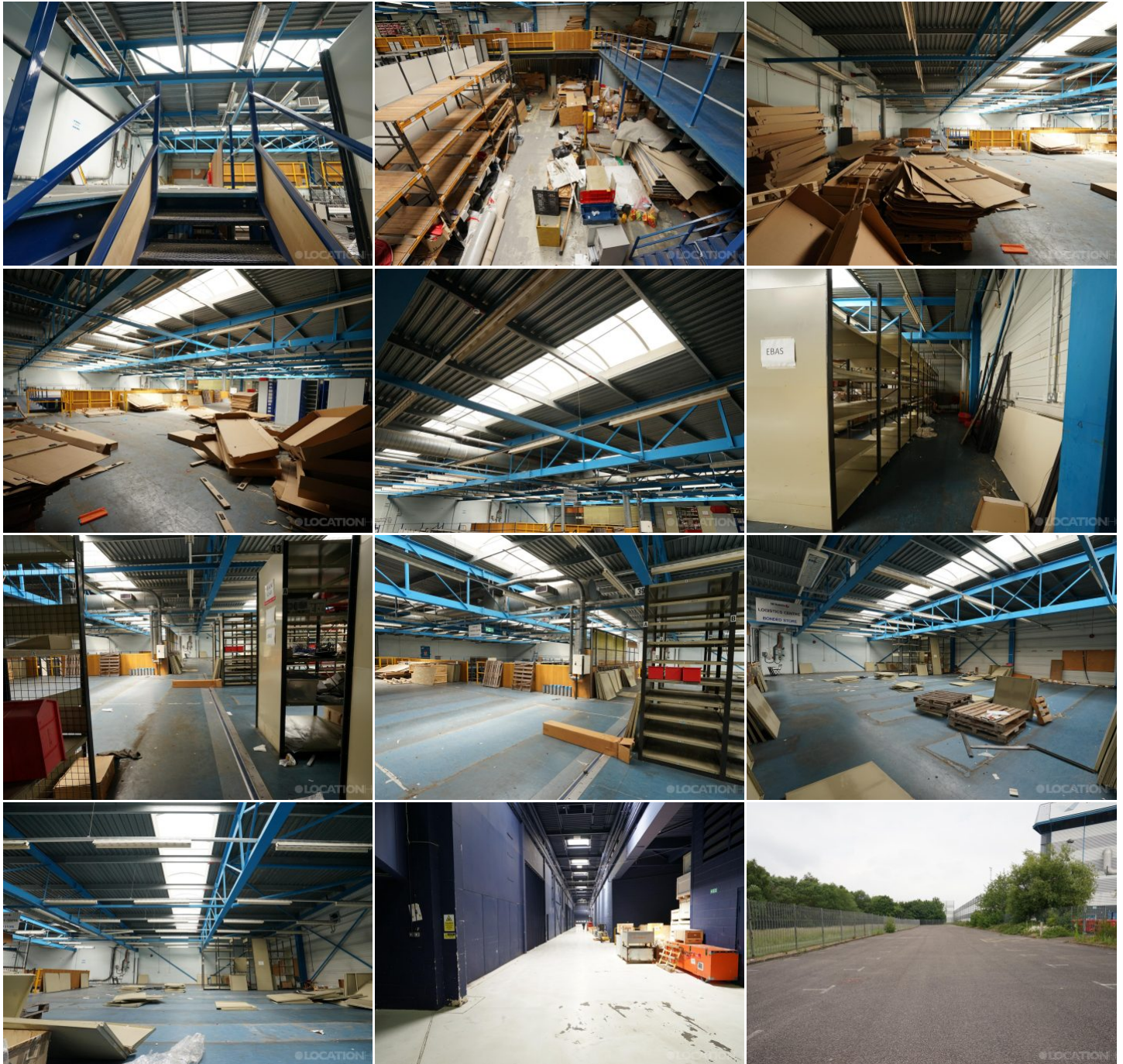


# LOCATION HQ

[More information available on the Location HQ website](#)

Tel: +44 (0) 203 302 0664 | E-mail: [info@locationhq.co.uk](mailto:info@locationhq.co.uk)

REF: 354899 REGION: London DISTANCE FROM LONDON: 16 Miles from the M25





# LOCATION HQ

[More information available on the Location HQ website](#)

Tel: **+44 (0) 203 302 0664** | E-mail: **info@locationhq.co.uk**

REF: 354899 REGION: London DISTANCE FROM LONDON: 16 Miles from the M25

