



# LOCATION HQ

[More information available on the Location HQ website](#)

Tel: **+44 (0) 203 302 0664** | E-mail: **info@locationhq.co.uk**

REF: 552193 REGION: Abandoned hotel uk, commercial multisite, Empty hotel available for filming, hardstanding, hotel available for hire, production base, Retro style hotel, set build, unit base, Vacant Hotel DISTANCE FROM LONDON : 24 Miles from the M25







# LOCATION HQ

[More information available on the Location HQ website](https://www.locationhq.co.uk)

Tel: +44 (0) 203 302 0664 | E-mail: [info@locationhq.co.uk](mailto:info@locationhq.co.uk)

REF: 552193 REGION: Abandoned hotel uk, commercial multisite, Empty hotel available for filming, hardstanding, hotel available for hire, production base, Retro style hotel, set build, unit base, Vacant Hotel DISTANCE FROM LONDON : 24 Miles from the M25







# LOCATION HQ

[More information available on the Location HQ website](#)

Tel: **+44 (0) 203 302 0664** | E-mail: [info@locationhq.co.uk](mailto:info@locationhq.co.uk)

REF: 552193 REGION: Abandoned hotel uk, commercial multisite, Empty hotel available for filming, hardstanding, hotel available for hire, production base, Retro style hotel, set build, unit base, Vacant Hotel DISTANCE FROM LONDON : 24 Miles from the M25







# LOCATION HQ

[More information available on the Location HQ website](#)

Tel: **+44 (0) 203 302 0664** | E-mail: [info@locationhq.co.uk](mailto:info@locationhq.co.uk)

REF: 552193 REGION: Abandoned hotel uk, commercial multisite, Empty hotel available for filming, hardstanding, hotel available for hire, production base, Retro style hotel, set build, unit base, Vacant Hotel DISTANCE FROM LONDON : 24 Miles from the M25





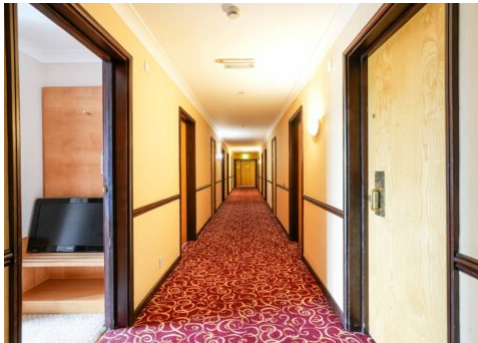


# LOCATION HQ

[More information available on the Location HQ website](https://www.locationhq.co.uk)

Tel: **+44 (0) 203 302 0664** | E-mail: **info@locationhq.co.uk**

REF: 552193 REGION: Abandoned hotel uk, commercial multisite, Empty hotel available for filming, hardstanding, hotel available for hire, production base, Retro style hotel, set build, unit base, Vacant Hotel DISTANCE FROM LONDON : 24 Miles from the M25





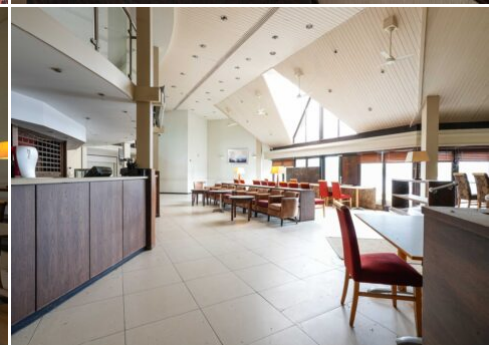
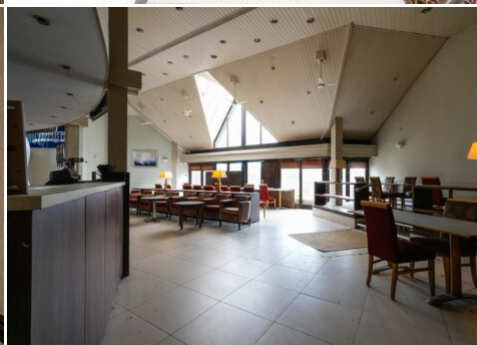
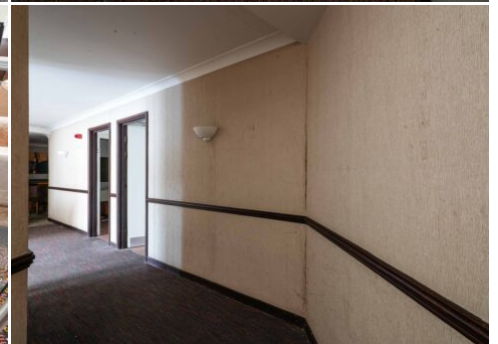
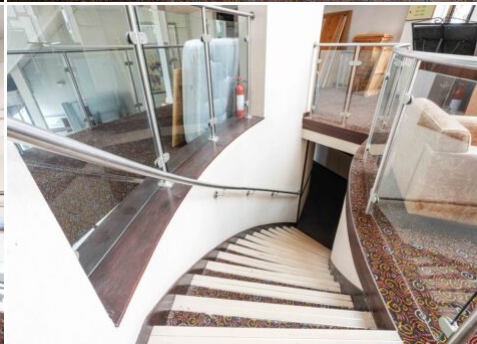
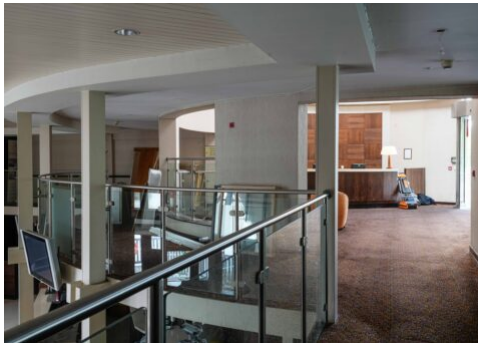
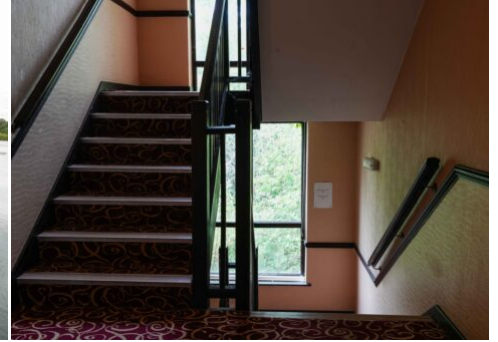


# LOCATION HQ

[More information available on the Location HQ website](https://www.locationhq.co.uk)

Tel: **+44 (0) 203 302 0664** | E-mail: **info@locationhq.co.uk**

REF: 552193 REGION: Abandoned hotel uk, commercial multisite, Empty hotel available for filming, hardstanding, hotel available for hire, production base, Retro style hotel, set build, unit base, Vacant Hotel DISTANCE FROM LONDON : 24 Miles from the M25





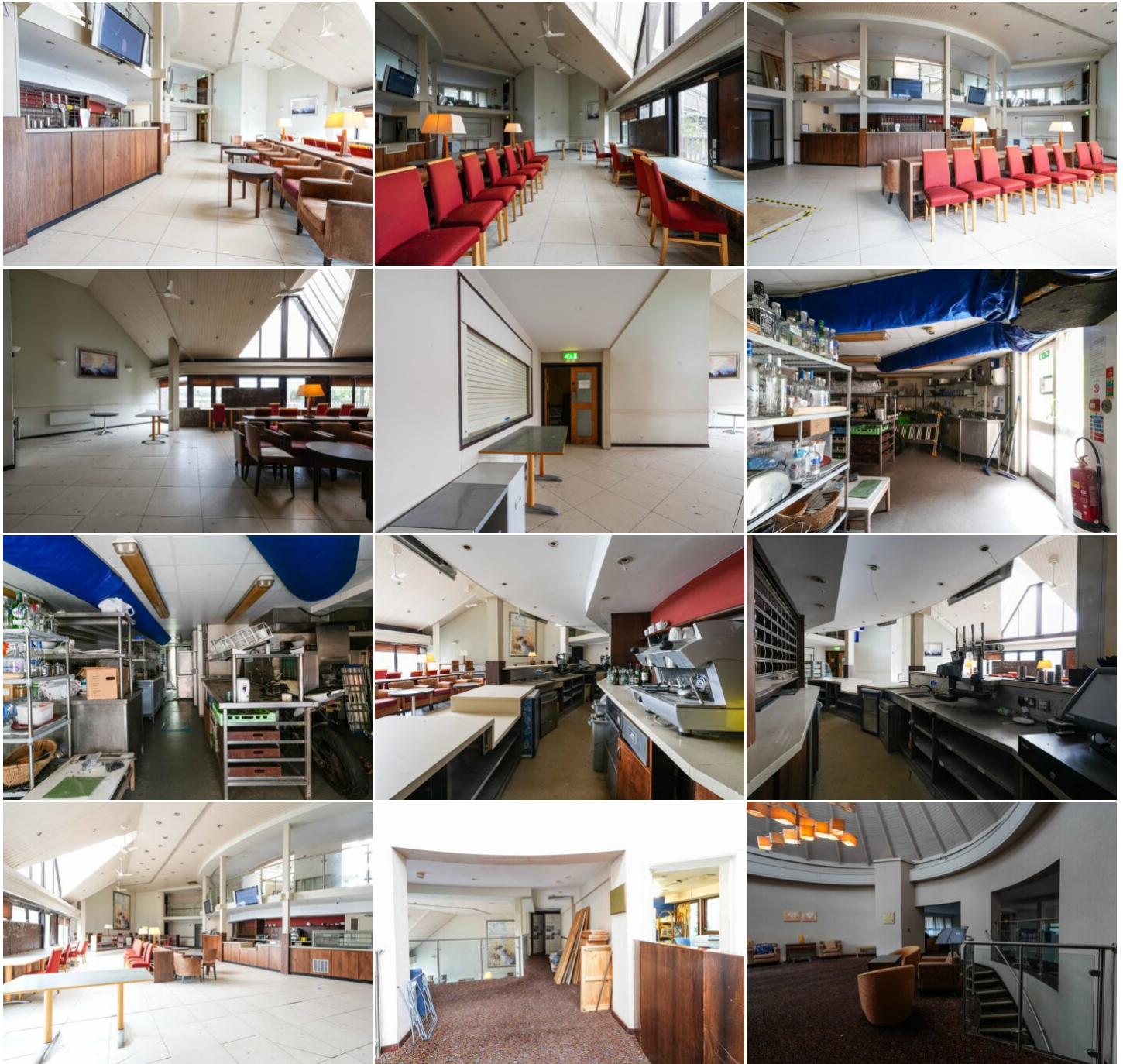


# LOCATION HQ

[More information available on the Location HQ website](https://www.locationhq.co.uk)

Tel: +44 (0) 203 302 0664 | E-mail: [info@locationhq.co.uk](mailto:info@locationhq.co.uk)

REF: 552193 REGION: Abandoned hotel uk, commercial multisite, Empty hotel available for filming, hardstanding, hotel available for hire, production base, Retro style hotel, set build, unit base, Vacant Hotel DISTANCE FROM LONDON : 24 Miles from the M25







# LOCATION HQ

[More information available on the Location HQ website](https://www.locationhq.co.uk)

Tel: +44 (0) 203 302 0664 | E-mail: [info@locationhq.co.uk](mailto:info@locationhq.co.uk)

REF: 552193 REGION: Abandoned hotel uk, commercial multisite, Empty hotel available for filming, hardstanding, hotel available for hire, production base, Retro style hotel, set build, unit base, Vacant Hotel DISTANCE FROM LONDON : 24 Miles from the M25







# LOCATION HQ

[More information available on the Location HQ website](#)

Tel: **+44 (0) 203 302 0664** | E-mail: **info@locationhq.co.uk**

REF: 552193 REGION: Abandoned hotel uk, commercial multisite, Empty hotel available for filming, hardstanding, hotel available for hire, production base, Retro style hotel, set build, unit base, Vacant Hotel DISTANCE FROM LONDON : 24 Miles from the M25

